

# INSTALLATION MANUAL

## Agra-GPS CNH-JD Bridge for Quadtrac (CAN steered) 2016-2020



Version 1.2  
January 2026

*Jan 2026*

Contact information

Agra-GPS Ltd.  
Box 2585  
Stony Plain, AB  
T7Z 1X9  
CANADA  
+1 (825) 247-2477  
support@agragps.com  
www.agra-gps.com

**Release Notice**

This is the January 2026 release of the CNH-JD Bridge for CNH Quadtrac with canbus steering installation manual.

**Disclaimer**

While every effort has been made to ensure the accuracy of this document, Agra-GPS Ltd assumes no responsibility for omissions and errors. Nor is any liability assumed for damages resulting from the use of information contained herein. Agra-GPS Ltd shall not be responsible or liable for incidental or consequential damages or a loss of anticipated benefits or profits, work stoppage or loss, or impairment of data arising out of the use, or inability to use, this system or any of its components.

**DO NOT USE THE CNH-JD Bridge IF YOU DISAGREE WITH THE DISCLAIMER.**

## **Important Safety Information**

Read this manual and the operation and safety instructions carefully before installing the CNH-JD Bridge.

- Follow all safety information presented within this manual.
- If you require assistance with any portion of the installation or service of your equipment, contact your Agra-GPS for support.
- Follow all safety labels affixed to the system components. Be sure to keep safety labels in good condition and replace any missing or damaged labels. To obtain replacements for missing or damaged safety labels, contact Agra-GPS.

When operating the machine after installing the CNH-JD Bridge, observe the following safety measures:

- Be alert and away of surroundings.
- Do not operate the CNH-JD Bridge system while under the influence of alcohol or an illegal substance.
- Remain in the operator's position in the machine at all times while the CNH-JD Bridge system is engaged.
- Determine and remain a safe working distance from other individuals. The operator is responsible for disabling the CNH-JD Bridge system when a safe working distance has been diminished.
- Ensure the CNH-JD Bridge is disabled prior to starting any maintenance work on the machine or parts of the CNH-JD Bridge system.
- Follow all safety instructions from the CNH system as well as the JD system!
- The CNH-JD Bridge must only be used in the field, never on the street!

## **Electrical Safety**

- Always verify that the power leads are connected to the correct polarity as marked. Reversing the power leads could cause severe damage to the equipment.
- Verify that all cables and connectors are not going over sharp edges and are not pinned, as this could cause power shortages and/or malfunctions.
- Ensure the battery is disconnected before installation

## Introduction

Congratulations on your purchase of the CNH-JD Bridge. The CNH-JD Bridge is designed to bridge the communication between a Case or New Holland Quadtrac (canbus autosteer ready) and a John Deere display (1800, 2600, 2630 or 4640). This allows a JD display to create maps in the John Deere format and also provides straight AB-Line autosteer.

The operator uses the JD display to create AB-lines. The current position is determined by a John Deere receiver and all this information is used by the CNH-JD Bridge to create steering instructions for the tractor. All conditions for autosteer such as minimum speed, steering enabled etc. must be met by the CNH system before the autosteer engage option in the tractor can be activated.

## NOTICE

This manual is not intended to replace the manuals for the tractor or the John Deere system. The operator must read and understand the manuals and instructions of these systems, before using the AgraGPS CNH-JD Bridge.

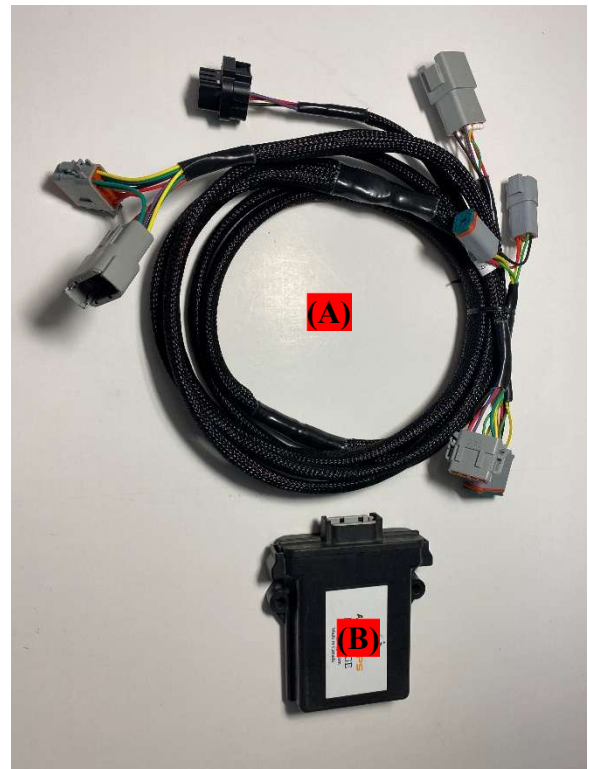
This kit applies to canbus -steered CNH Quadtrac machines, before 2021, which have the Pro-700 monitor instead of the Pro-1200 monitor. There may be some 2020 machines with the Pro-1200, and if you have this, please use the CNH-JD-M1200 kit instead.

## What's In The Box

In your order you should receive the following items:

- a. CNH-JD-Q Harness Kit
- b. CNH-JD-Q Bridge
- c. (optional) Serial NMEA Extension Adapters
- d. (optional) RAM Monitor Mount
- e. (optional) JD Receiver Mount

**NOTE:** If you are missing any of these items or they appear to be damaged please contact +1 (825) 247-2477 or [support@agragps.com](mailto:support@agragps.com)



## Installation of the CNH-JD Bridge

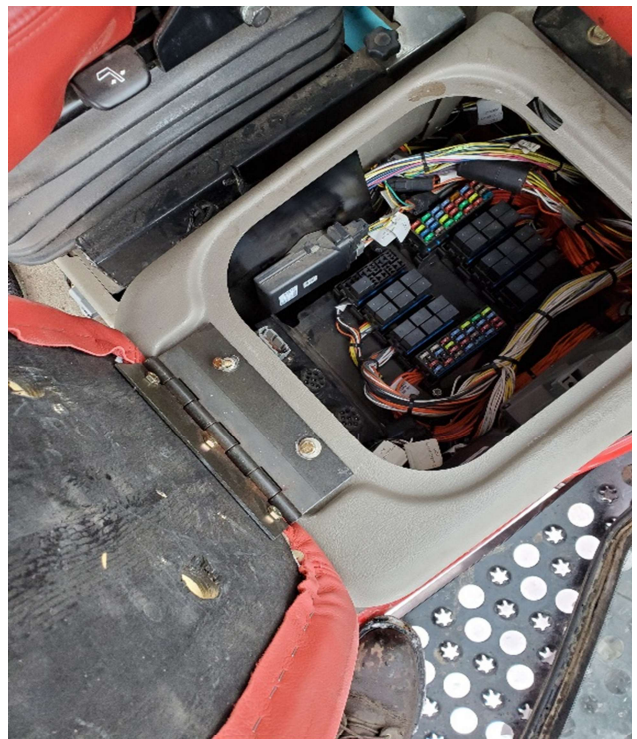
Note: To verify that your Case Quadtrac is a “canbus” steered machine, please check for a built-in wheel angle sensor at the articulation point. If the wheel angle sensor shown below is installed on your machine, your Quadtrac is canbus steered!



### Step 1: Disconnect Existing Steering Controller

Typically, the tractor is supplied with a CNH NavController module (by Trimble). This must be disconnected.

(A) Remove the buddy seat.

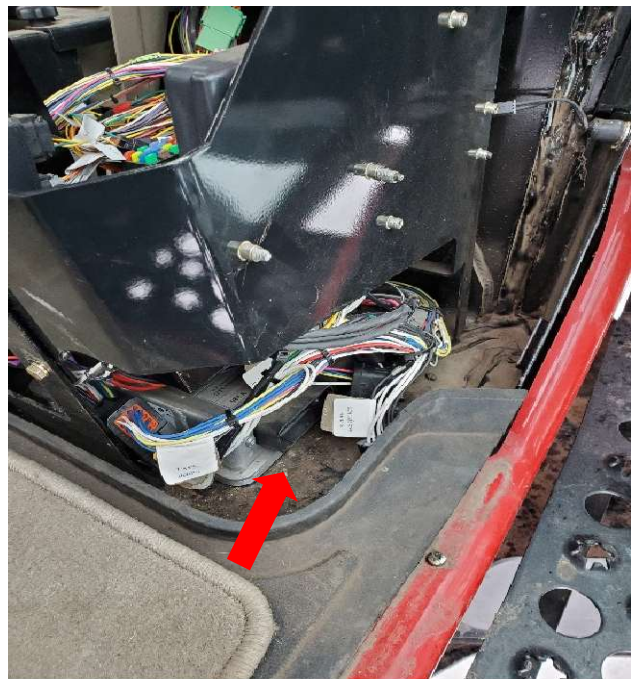




(B) Remove the plastic cover that was under the buddy seat, there are bolts under the rubber floor mat that must be removed, and some other plastic mounts between passenger and driver seat. You should now be able to lift the buddy seat enough to undo the 2 connectors into the nav controller.



(C) At the bottom, underneath the fuse panel there will likely be a large silver CNH navigation controller. Remove both the 40 and 24 pin connectors.

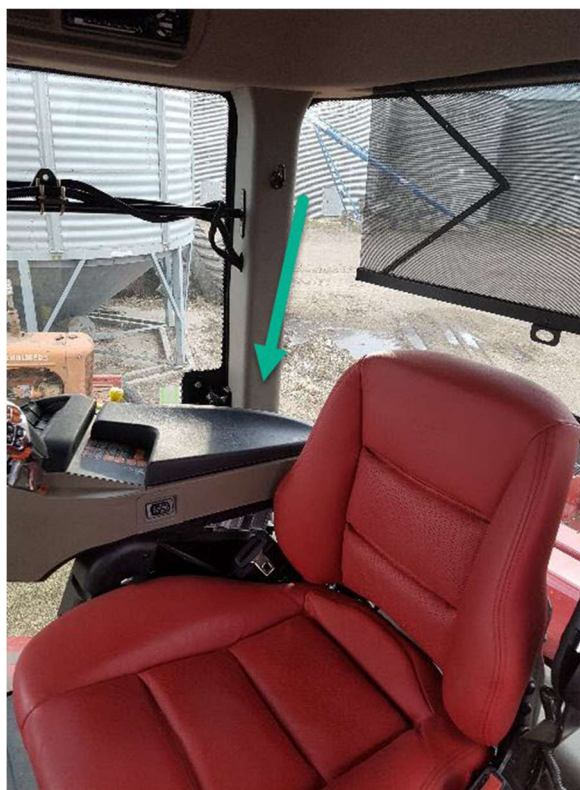


If the Serial NMEA extension adapter was provided, it will connect to the 40-pin machine connector. The extension cable is typically run behind the seat (the air vent and cup-holder inserts may be removed to assist with routing). The other end provides a 3-pin triangular Deutsch plug typically used with some seed rate controllers, or an additional adapter with a standard 9-pin D-sub RS-232 connector.

## **Step 2: Mounting the CNH-JD Bridge**

The CNH-JD Bridge is installed in the right back corner of the cab.

The plastic cover can be lifted enough to access the required connectors and there is space for the Bridge box at the bottom.



Open the side door and then remove the top 2 screws for round pipe mount.



Now remove the door latch which still holds the plastic cover in its place.  
Once the door latch is off, carefully lift the plastic from the cab pillar.



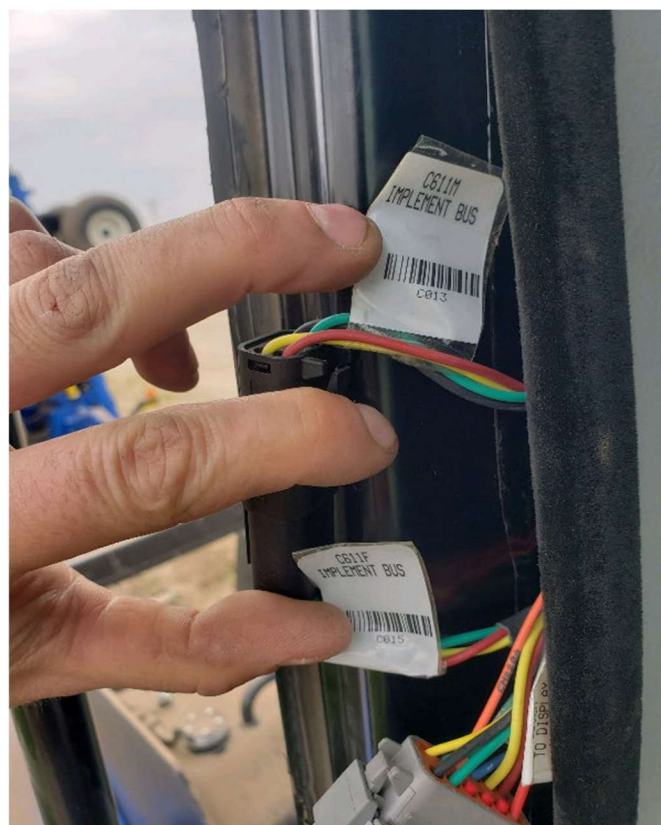
Find the connector labelled C602 behind the panel.  
Open it and connect the provided AgraGPS harness.

Note: It is sometimes also called the “color display” connector! If you do not have a display you may only see one open connector. If a display cable exists you have to open the connection and insert the AgraGPS connectors.





The 4-pin deutsch insert into the C611M and 611F connectors. This will integrate your JD receiver and display into the ISO Harness of your tractor.



Run the cable to the bottom to connect to the CNH-JD Bridge.  
There is enough space behind the plastic panel to hide the cable.



Now run the display cable through the oval opening.

The 12-pin Deutsch connectors fits through that opening and must be routed to the bottom of the plastic panel, together with the first cable from the connector.

Alternatively, if the hole is too full of other cables, the monitor plug may be de-pinned, and then re-pinned after the cable is fed through.

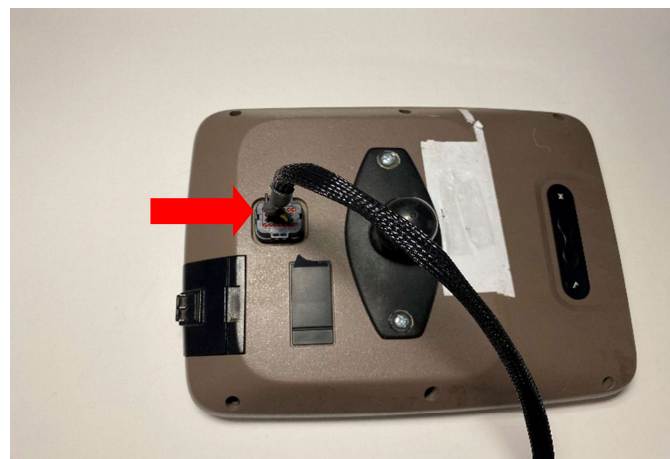


Once you have routed the cable to the bottom, connect it with the Bridge. Then place the bridge in the opening



Route the black monitor connector to your JD-Display mount and connect it to your monitor.

**Note:** The back of your display may look different but this connector will work for all displays.



### **Step 3: Mounting the JD receiver**

The mounts for the JD display and receiver are NOT part of the CNH-JD Bridge kit, but can be ordered separately.

The JD mount can easily be bolted to the metal bracket provided on the roof of the CNH Quadtrac.



The JD mount can easily be bolted to the metal bracket provided on the roof of the CNH Quadtrac.

Using the short 12-pin adapter cable, the JD receiver is connected to the 12-pin Deutsch in the CNH tractor roof.

**\*\*IMPORTANT\*\***

**ENSURE THE ADAPTER CABLE IS USED**

**DO NOT CONNECT the John Deere GPS receiver without the adapter cable to the CNH roof outlet!!**





## Operation

Refer to the Bridge User Manual for basic steps to access the Virtual Terminal on the JD monitor, where the Bridge ISO app can be found. **NOTE:** If you do not have the Bridge User Manual it can be found at [agragps.com](http://agragps.com).

Use the John Deere monitor as you do in a John Deere tractor, set an AB-line, activate "Steer ON", then use the build-in resume button to activate autosteer!

Note: If you have your forward/reverse level in the park position, you will not be able to engage. The John Deere monitor will show a "Road switch" message.

On a New Holland T9 the resume button is located in the joystick, however it works the same.

